

Installation Manual

A-2572 REPLACEMENT LEFT FRONT AIR SPRING ASSEMBLY FOR 2003-2010 AUDI, PORSCHE AND VW



Congratulations on your purchase of an Arnett® air suspension product. We at Arnett Incorporated are proud to offer a high quality product at the industry's most competitive pricing. Thank you for your confidence in us and our product.

Proper installation is essential to experience and appreciate the benefits of this system. Please take a moment to review these installation instructions before you begin to install these components on your vehicle. The removal and installation of air suspension products should only be performed by a fully qualified, ASE Certified, professional.

It is equally important to be aware of all necessary safety measures while installing your new Air Suspension System. This includes proper lifting and immobilizing of the vehicle and isolation of any stored energy to prevent personal injury or property damage.

"Engineered to Ride, Built to Last™"



WARNING: The air suspension system is under pressure (up to 10 bar, or 150 lbf/in) verify pressure has been relieved and disconnect power to the air suspension system prior to disassembly. Do not allow dirt or grease to enter the system. Always wear standard protective hand, ear, and eye protection when servicing the air suspension system.

KIT CONTAINS:

PARTS LIST

P/N	QTY	DESCRIPTION
21-4808	1	REPLACEMENT LEFT FRONT AIR SPRING ASSEMBLY
21-6471	1	ACCESSORY KIT

Arnett® is committed to the quality of its products. If you have a question or problem with any Arnett product, please contact Arnett by calling **800-251-8993** during normal business hours or email techassistance@arnottinc.com

GENERAL INFORMATION:

- Not to be stored below 5°F (-15°C) and above 122°F (50°C).
- Avoid damage to air lines and cables.
- Removal and installation is only to be performed by fully qualified personnel.
- Use car manufacturer's diagnostic software.

CAUTION: *Damage to the vehicle and air spring assembly can be incurred if work is carried out in a manner other than specified in the instructions or in a different sequence.*



The ignition must remain switched off during the shock removal and replacement.



Consult your vehicles owners manual, service manual, or car dealer for the correct jacking points on your vehicle and for additional care, safety and maintenance instructions. Under no circumstances should any work be completed underneath the vehicle if it is not adequately supported, as serious injuries and death can occur.

AIR SHOCK REMOVAL

1. SET STEERING TO STRAIGHT AHEAD.
2. RAISE VEHICLE.
3. REMOVE FRONT TIRE.
4. REMOVE AIR LINE FROM THE SHOCK AT THE AIR FITTING. NEW AIR VALVE SUPPLIED WITH AIR SPRING. (FIGURE A)

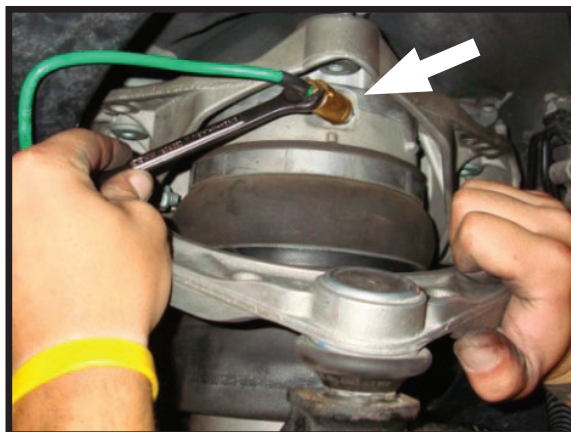


FIGURE A

5. REMOVE THE LOWER SHOCK-MOUNTING BOLT. (FIGURE B)



FIGURE B

6. REMOVE THE BALL JOINT NUT FROM THE SPINDLE ASSEMBLY. (FIGURE C)

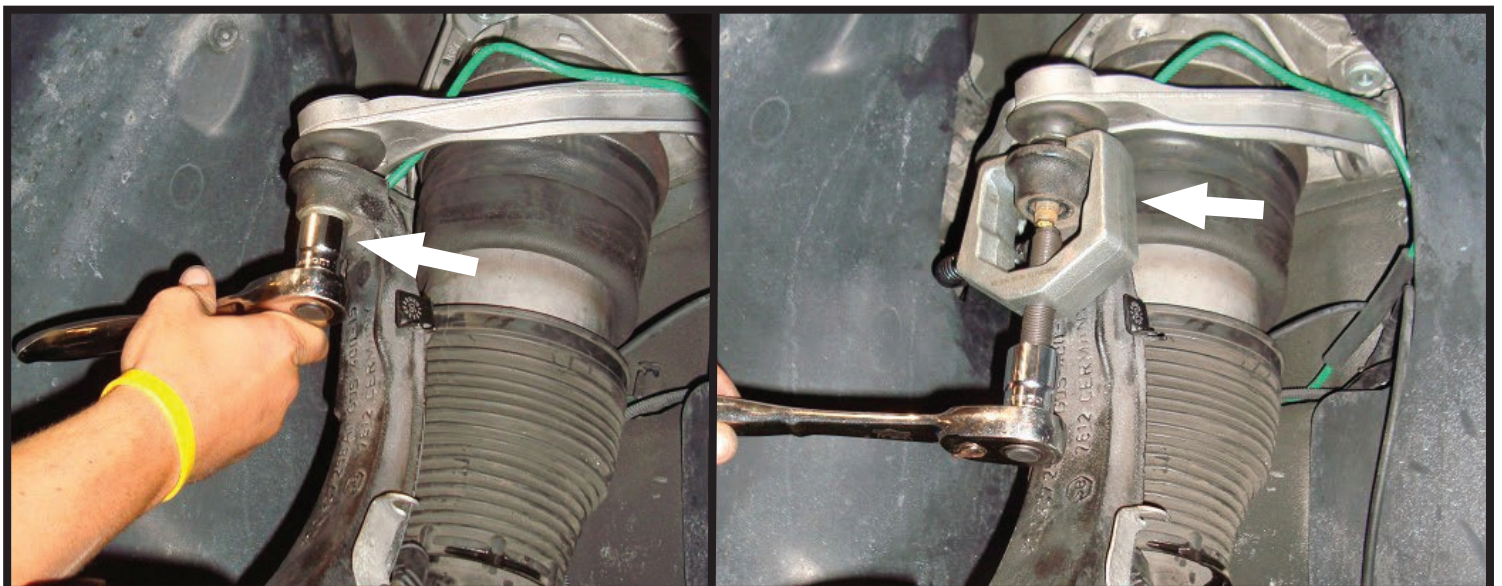


FIGURE C

7. REMOVE THE SWAY BAR END LINK TO SHOCK MOUNTING BOLT. (FIGURE D)



FIGURE D

8. DISCONNECT THE TRAVEL LINKAGE SENSOR CONNECTOR. (FIGURE E)

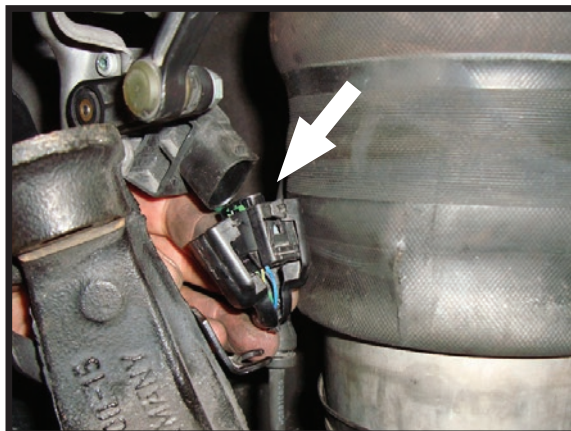


FIGURE E

9. LIFT HOOD AND REMOVE THE THREE (3) MOUNTING BOLTS THAT SECURE THE SHOCK. REMOVE PLASTIC COVER TO GAIN ACCESS TO THE THIRD BOLT. (FIGURE F)

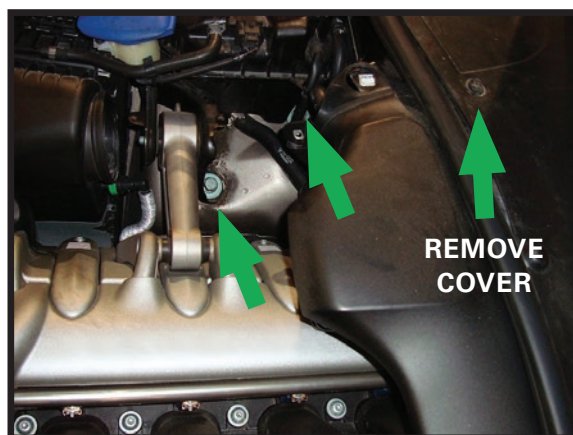


FIGURE F

10. REMOVE SHOCK ASSEMBLY FROM THE VEHICLE. (FIGURE G)



FIGURE G

AIR SPRING DISASSEMBLY/ASSEMBLY



Air spring may be under pressure. Slowly remove the air valve to deflate.

1. REMOVE AND DISCARD THE FOUR BOLTS SECURING THE AIR SPRING TO THE AIR SPRING MOUNT. (FIGURE H)

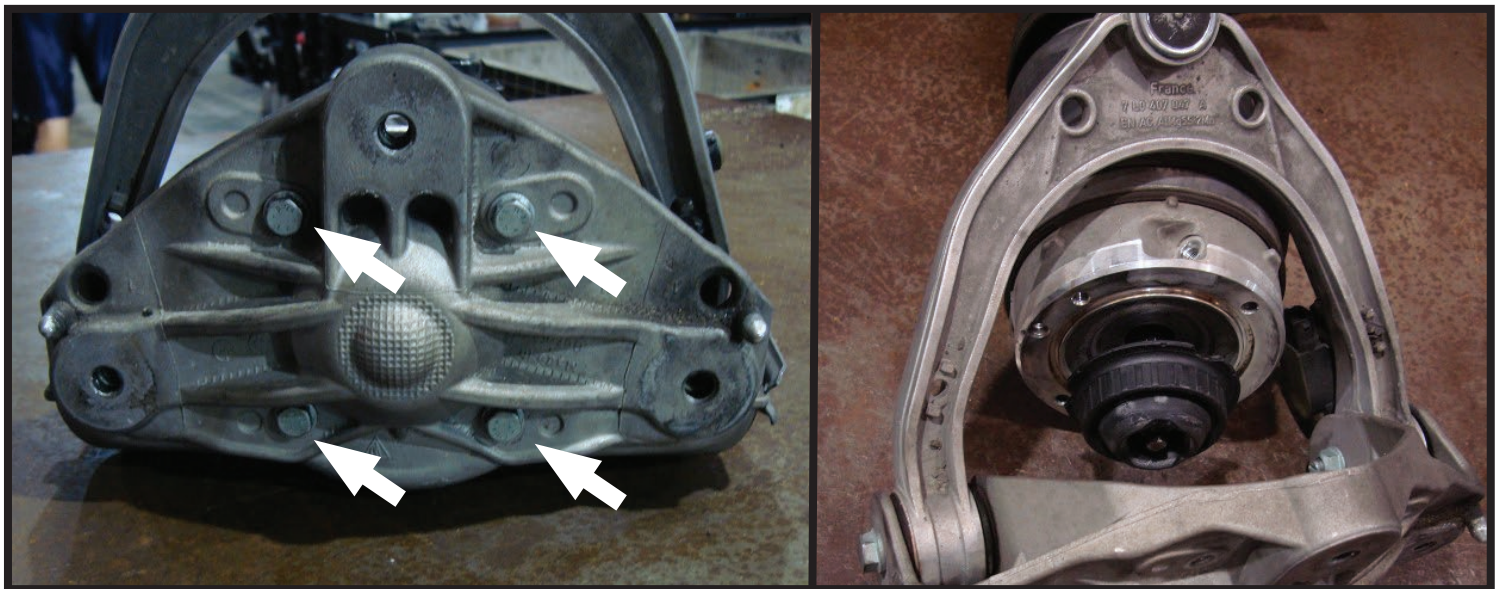


FIGURE H

2. REMOVE THE TOP NUT FROM THE AIR SPRING. REMOVE AND DISCARD THE OLD RUBBER ROD END MOUNT AND THE O-RING. (FIGURE I)

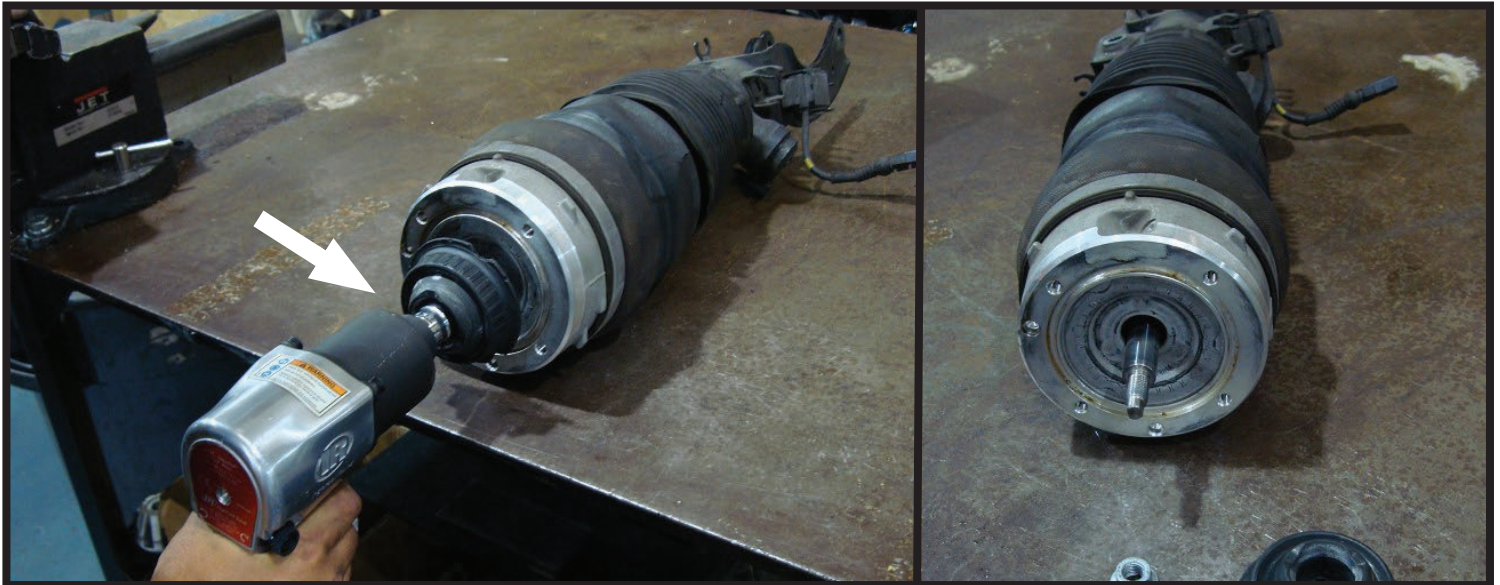


FIGURE I

3. REMOVE THE BOTTOM OF THE DUST BOOT FROM THE SHOCK. (FIGURE J)



FIGURE J

4. REMOVE AIR SPRING ASSEMBLY FROM SHOCK. REMOVE THE SHOCK O-RING AND DISCARD. (FIGURE K)

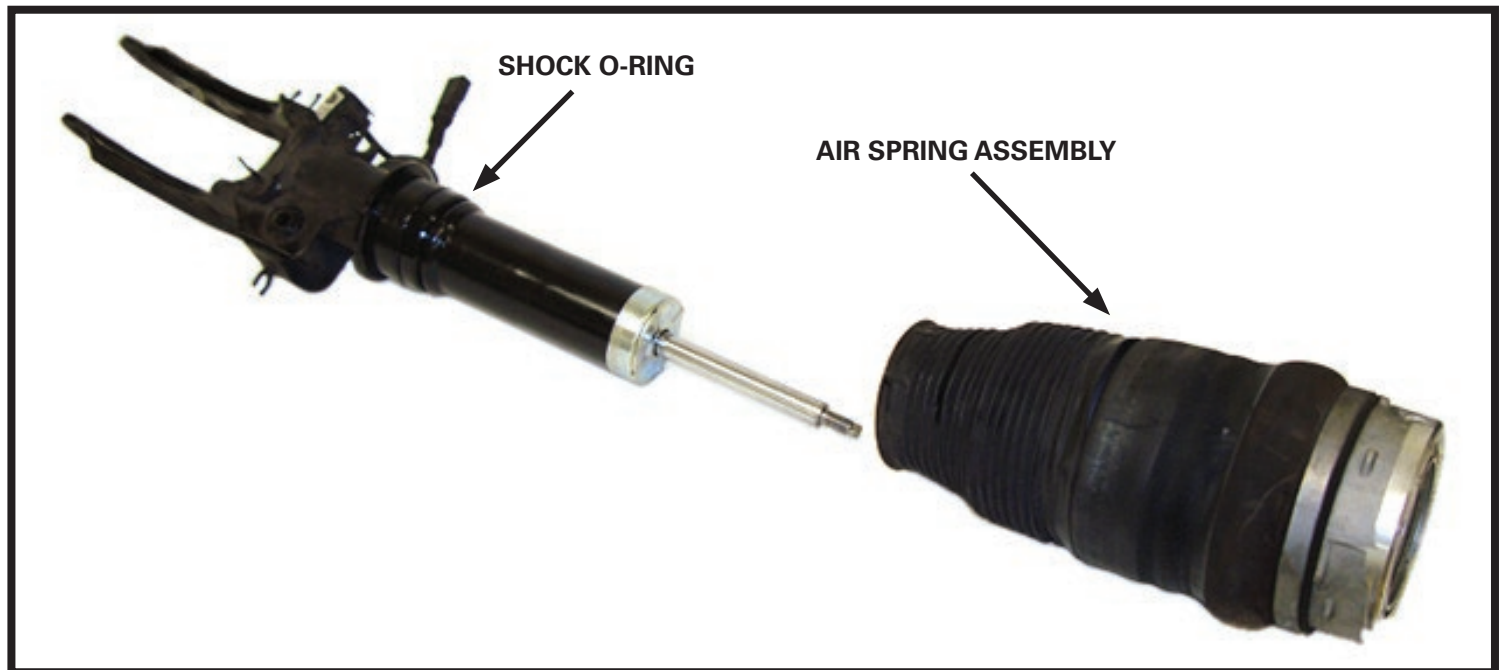


FIGURE K

5. INSTALL NEW SHOCK O-RING, APPLY LUBRICATION TO THE O-RING. USE CAUTION WHEN INSTALLING O-RING - IF DAMAGED, THE AIR SPRING WILL NOT HOLD PRESSURE. (FIGURE L)



FIGURE L

6. INSTALL THE NEW AIR SPRING ONTO THE SHOCK. (FIGURE M)

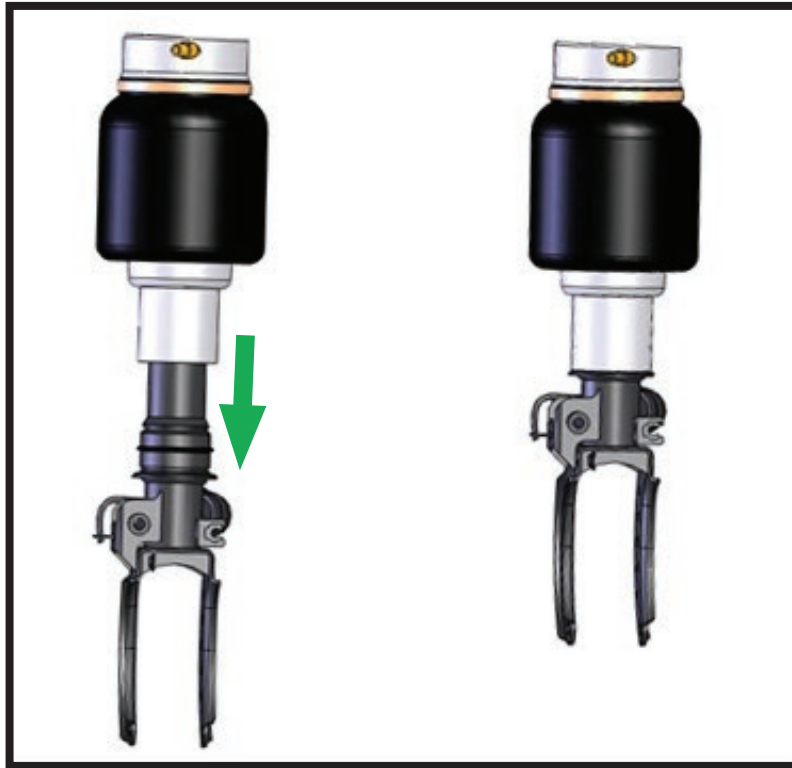


FIGURE M

7. INSTALL THE NEW O-RING AND RUBBER ROD END MOUNT AND NUT ONTO THE SHOCK, TIGHTEN TO MANUFACTURER'S SPECIFICATION. (FIGURE N)

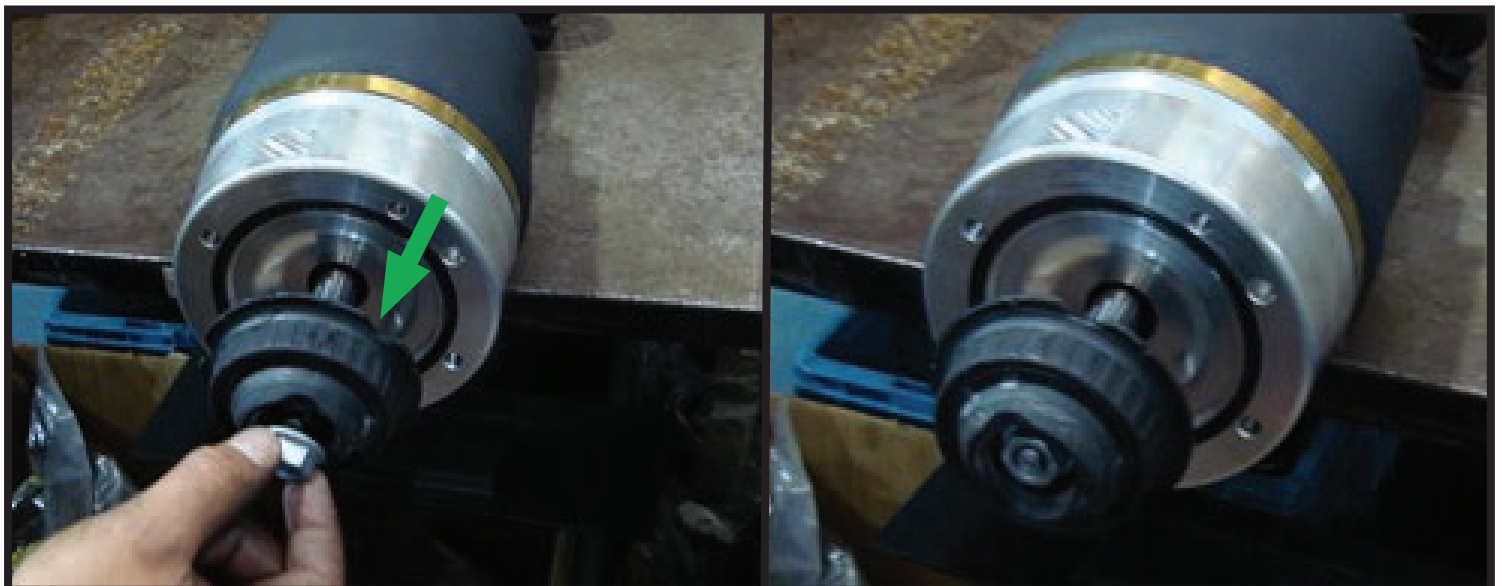


FIGURE N

8. ALIGN THE AIR INLET WITH THE SHOCK FORKS (FIGURE O).

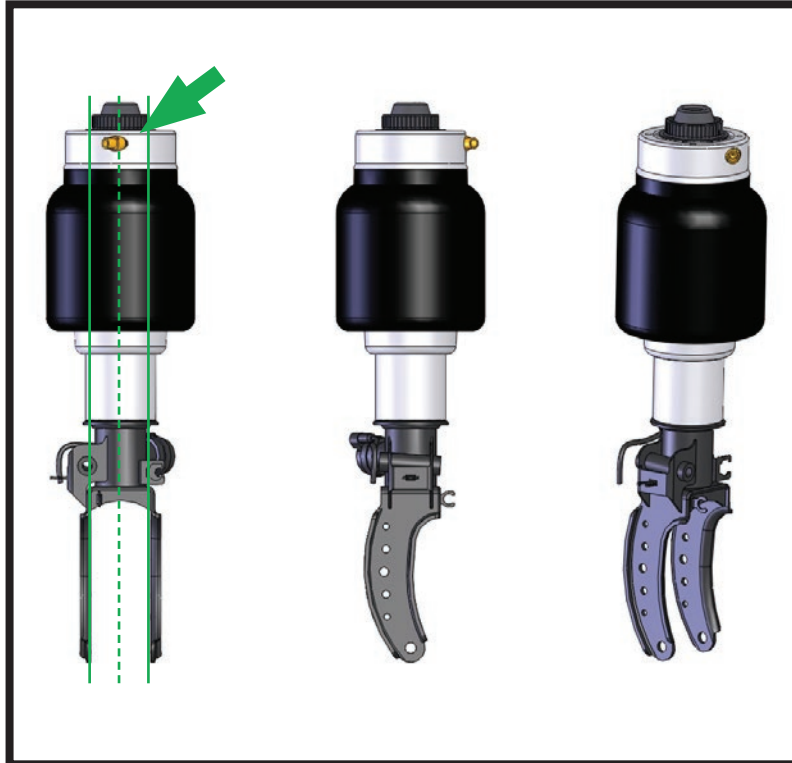


FIGURE O

9. INSTALL THE NEW FOUR BOLTS SECURING THE SHOCK TO THE SHOCK MOUNT. TIGHTEN TO MANUFACTURER'S SPECIFICATIONS. (FIGURE P).

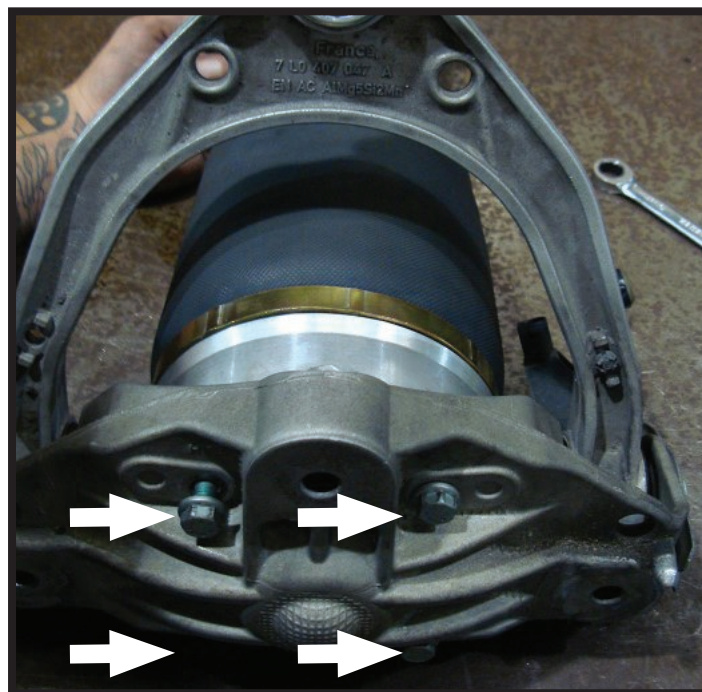


FIGURE P

AIR SHOCK INSTALLATION

1. RE-INSTALL SHOCK INTO VEHICLE (REVERSE OF REMOVAL STEPS); UNLESS OTHERWISE SPECIFIED TIGHTEN ALL FASTENING HARDWARE TO MANUFACTURES SPECIFICATION.

AIR HOSE INSTALLATION

NOTE: *Installation of the air line to the air fitting is to be performed as shown below.*

1. REMOVE THE AIR LINE FROM THE AIR FITTING BY REMOVING THE SPLIT RING COLLET AND SLIDING THE AIR FITTING OFF THE HOSE. (FIGURE Q)

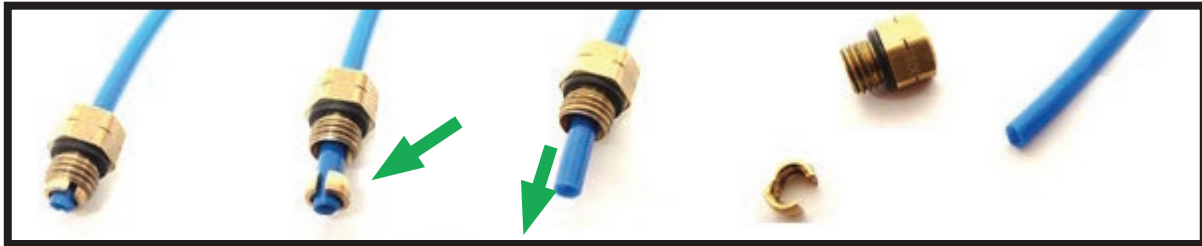


FIGURE Q

2. REMOVE PLASTIC PIN FROM NEW AIR VALVE. (FIGURE R)

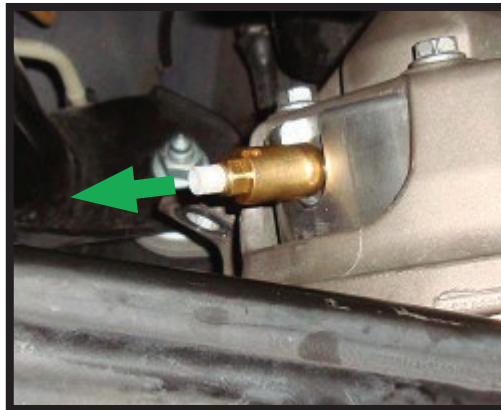


FIGURE R

9. PUSH AIR HOSE INTO NEW FITTING UNTIL IT BOTTOMS OUT; PULL OUTWARD TO VERIFY HOSE IS SECURE IN AIR VALVE. (FIGURE S)

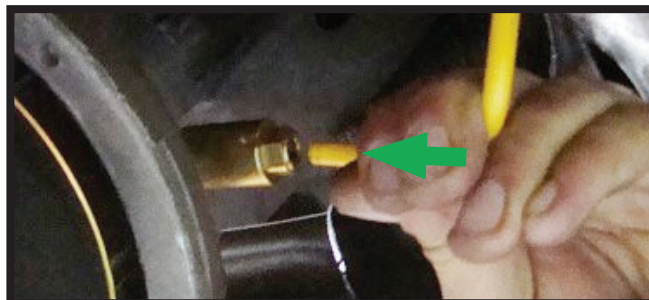


FIGURE S

4. INSTALLATION COMPLETE.