

# Installation Manual

## A-2523 REPLACEMENT REAR AIR SPRING ASSEMBLY FOR 2003-2010 AUDI, PORSCHE AND VW



Congratulations on your purchase of an Arnett® air suspension product. We at Arnett Incorporated are proud to offer a high quality product at the industry's most competitive pricing. Thank you for your confidence in us and our product.

Proper installation is essential to experience and appreciate the benefits of this system. Please take a moment to review these installation instructions before you begin to install these components on your vehicle. The removal and installation of air suspension products should only be performed by a fully qualified, ASE Certified, professional.

It is equally important to be aware of all necessary safety measures while installing your new Air Suspension System. This includes proper lifting and immobilizing of the vehicle and isolation of any stored energy to prevent personal injury or property damage.

### "Engineered to Ride, Built to Last™"



**WARNING:** The air suspension system is under pressure (up to 10 bar, or 150 lbf/in) verify pressure has been relieved and disconnect power to the air suspension system prior to disassembly. Do not allow dirt or grease to enter the system. Always wear standard protective hand, ear, and eye protection when servicing the air suspension system.

#### KIT CONTAINS:

#### PARTS LIST

P/N	QTY	DESCRIPTION
21-4827	1	REPLACEMENT REAR AIR SPRING ASSEMBLY
21-6472	1	ACCESSORY KIT

Arnett® is committed to the quality of its products. If you have a question or problem with any Arnett product, please contact Arnett by calling [800-251-8993](tel:800-251-8993) during normal business hours or email [techassistance@arnottinc.com](mailto:techassistance@arnottinc.com)

## GENERAL INFORMATION:

- Not to be stored below 5°F (-15°C) and above 122°F (50°C).
- Avoid damage to air lines and cables.
- Removal and installation is only to be performed by fully qualified personnel.
- Use car manufacturer's diagnostic software.

**CAUTION:** *Damage to the vehicle and air spring assembly can be incurred if work is carried out in a manner other than specified in the instructions or in a different sequence.*



*The ignition must remain switched off during the shock removal and replacement.*



*Consult your vehicles owners manual, service manual, or car dealer for the correct jacking points on your vehicle and for additional care, safety and maintenance instructions. Under no circumstances should any work be completed underneath the vehicle if it is not adequately supported, as serious injuries and death can occur.*

## AIR STRUT REMOVAL

1. SET STEERING TO STRAIGHT AHEAD.
2. RAISE VEHICLE.
3. REMOVE REAR TIRE.
4. UNPLUG THE ELECTRICAL CONNECTOR. (FIGURE A)



FIGURE A

5. REMOVE THE FOUR (4) TOP MOUNTING BOLTS. (FIGURE B)



FIGURE B

6. REMOVE THE LOWER SHOCK NUT AND BOLT. (FIGURE C)



FIGURE C

7. REST SHOCK ON UPPER CONTROL ARMS AND REMOVE THE AIRLINE. (FIGURE D)

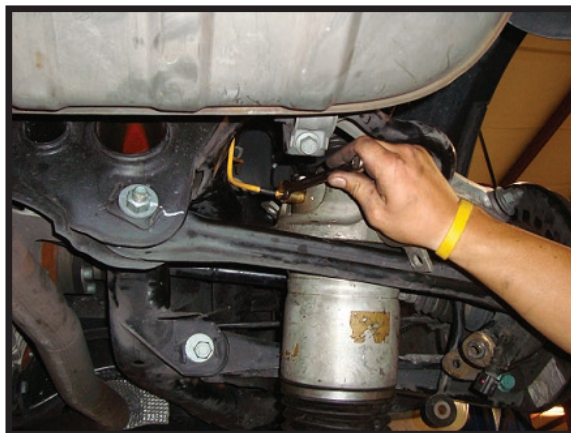


FIGURE D

8. REMOVE AIR STRUT FROM THE VEHICLE. (FIGURE E)



FIGURE E

9. SLOWLY REMOVE THE AIR VALVE TO DEFLATE THE AIR STRUT. (FIGURE F)

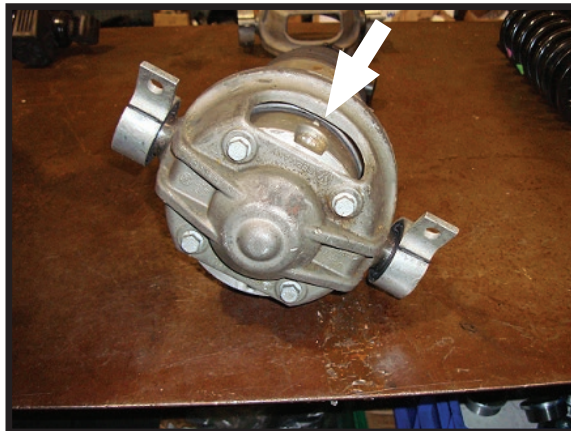


FIGURE F

10. REMOVE THE FOUR (4) TOP MOUNT BOLTS. (FIGURE G)



FIGURE G

11. REMOVE THE TOP SHOCK NUT. (FIGURE H)

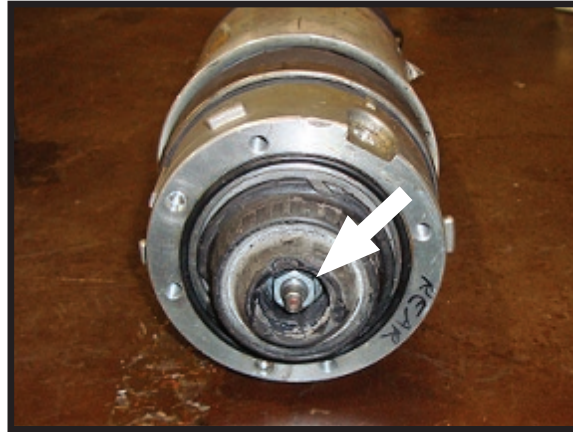


FIGURE H

12. REMOVE TOP RUBBER MOUNT AND O-RING. (FIGURE I)



FIGURE I

13. REMOVE THE AIR SPRING FROM THE SHOCK. (FIGURE J)



FIGURE J

14. REMOVE AND DISCARD THE BUMP STOP. (FIGURE K)



FIGURE K

15. INSTALL NEW O-RING AND APPLY LUBRICATION. (FIGURE L)



FIGURE L

16. INSTALL AIR SPRING ONTO THE SHOCK. (FIGURE M)



FIGURE M

17. INSTALL TOP RUBBER MOUNT. (FIGURE N)



FIGURE N

18. REINSTALL SHOCK NUT. (FIGURE O)

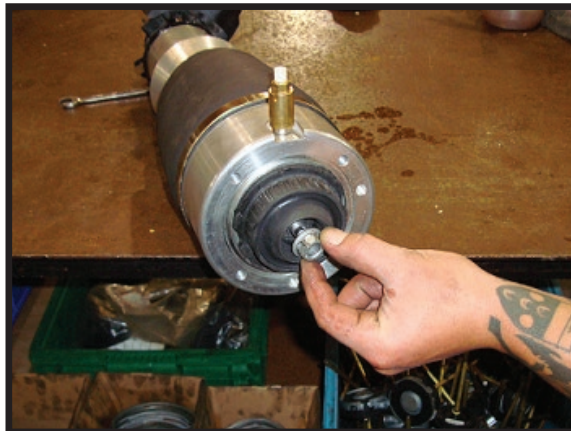


FIGURE O

19. GRIP RUBBER MOUNT AND TIGHTEN SHOCK NUT. (FIGURE P)



FIGURE P

20. INSTALL O-RING INTO THE O-RING GROOVE ON THE TOP MOUNT. (FIGURE Q)



FIGURE Q

21. INSTALL SHOCKTOP MOUNT AND TIGHTEN FOUR (4) TOP MOUNT BOLTS . (FIGURE R)



FIGURE R

## REAR AIR STRUT INSTALLATION



*Tighten all nuts and bolts to manufacturers specifications during the installation process.*

1. INSTALLATION IS IN REVERSE ORDER OF AIR STRUT REMOVAL.